

Mrs Rocha

MOVECHO®

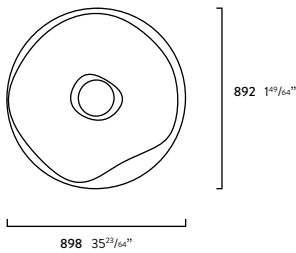
Design by Alzira Peixoto + Carlos Mendonça



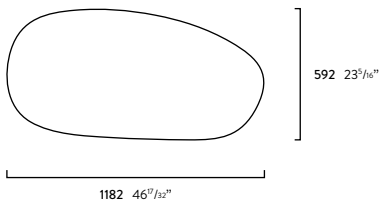
Material:

Natural / Dark Agglomerated Cork

Toughened glass



	W x D x H	Article no.	Pack	Weight
01 - Dark cork	W 898 x D 892 x H 45 mm W 35 ²³ / ₆₄ " x D 35 ¹ / ₁₆ " x H 1 ⁴⁹ / ₆₄ "	130.001.001	2 pcs	10 kg 22 ¹ / ₁₆ lb
01 - Natural cork	W 898 x D 892 x H 45 mm W 35 ²³ / ₆₄ " x D 35 ¹ / ₁₆ " x H 1 ⁴⁹ / ₆₄ "	130.001.002	2 pcs	10 kg 22 ¹ / ₁₆ lb

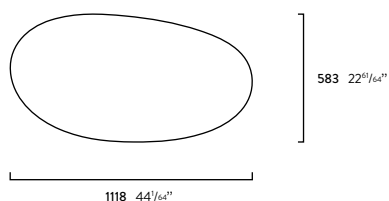


	W x D x H	Article no.	Pack	Weight
02 - Dark cork	W 1182 x D 592 x H 45 mm W 46 ⁷ / ₃₂ " x D 23 ⁵ / ₁₆ " x H 1 ⁴⁹ / ₆₄ "	130.002.001	2 pcs	9 kg 19 ¹³ / ₁₆ lb
02 - Natural cork	W 1182 x D 592 x H 45 mm W 46 ⁷ / ₃₂ " x D 23 ⁵ / ₁₆ " x H 1 ⁴⁹ / ₆₄ "	130.002.002	2 pcs	9 kg 19 ¹³ / ₁₆ lb

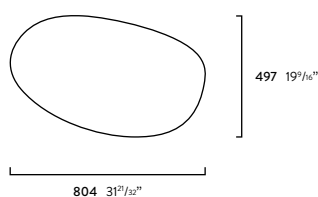
Mrs Rocha

MOVECHO®

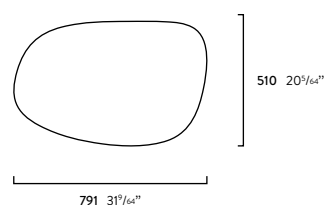
Design by Alzira Peixoto + Carlos Mendonça



	W x D x H	Article no.	Pack	Weight
03 - Dark cork	W 1118 x D 583 x H 45 mm W 44 ^{1/64} " x D 22 ^{61/64} " x H 1 ^{49/64} "	130.003.001	2 pcs	9 kg 19 ^{13/16} lb
03 - Natural cork	W 1118 x D 583 x H 45 mm W 44 ^{1/64} " x D 22 ^{61/64} " x H 1 ^{49/64} "	130.003.002	2 pcs	9 kg 19 ^{13/16} lb



	W x D x H	Article no.	Pack	Weight
04 - Dark cork	W 804 x D 497 x H 45 mm W 31 ^{7/32} " x D 19 ^{7/16} " x H 1 ^{49/64} "	130.004.001	2 pcs	7 kg 15 ^{7/16} lb
04 - Natural cork	W 804 x D 497 x H 45 mm W 31 ^{7/32} " x D 19 ^{7/16} " x H 1 ^{49/64} "	130.004.002	2 pcs	7 kg 15 ^{7/16} lb

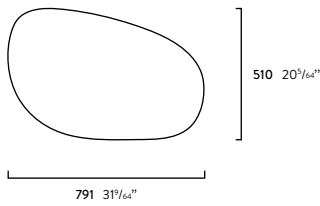


	W x D x H	Article no.	Pack	Weight
05 - Dark cork	W 791 x D 510 x H 45 mm W 46 ^{7/32} " x D 23 ^{3/16} " x H 1 ^{49/64} "	130.005.001	2 pcs	7 kg 15 ^{7/16} lb
05 - Natural cork	W 791 x D 510 x H 45 mm W 46 ^{7/32} " x D 23 ^{3/16} " x H 1 ^{49/64} "	130.005.002	2 pcs	7 kg 15 ^{7/16} lb

Mrs Rocha

MOVECHO®

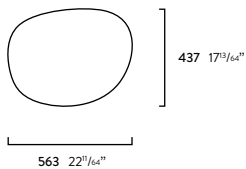
Design by Alzira Peixoto + Carlos Mendonça



	W x D x H	Article no.	Pack	Weight
06 - Dark cork	W 791 x D 510 x H 45 mm W 46 ¹¹ / ₃₂ " x D 23 ⁵ / ₁₆ " x H 1 ⁴⁹ / ₆₄ "	130.006.001	2 pcs	7 kg 15 ⁷ / ₁₆ lb
06 - Natural cork	W 791 x D 510 x H 45 mm W 46 ¹¹ / ₃₂ " x D 23 ⁵ / ₁₆ " x H 1 ⁴⁹ / ₆₄ "	130.006.002	2 pcs	7 kg 15 ⁷ / ₁₆ lb



	W x D x H	Article no.	Pack	Weight
07 - Dark cork	W 585 x D 415 x H 45 mm W 23 ¹ / ₃₂ " x D 16 ¹¹ / ₃₂ " x H 1 ⁴⁹ / ₆₄ "	130.007.001	2 pcs	6 kg 13 ¹ / ₄ lb
07 - Natural cork	W 585 x D 415 x H 45 mm W 23 ¹ / ₃₂ " x D 16 ¹¹ / ₃₂ " x H 1 ⁴⁹ / ₆₄ "	130.007.002	2 pcs	6 kg 13 ¹ / ₄ lb

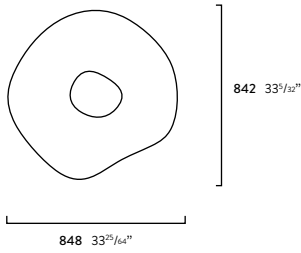


	W x D x H	Article no.	Pack	Weight
08 - Dark cork	W 563 x D 437 x H 45 mm W 23 ¹ / ₃₂ " x D 16 ¹¹ / ₃₂ " x H 1 ⁴⁹ / ₆₄ "	130.008.001	2 pcs	6 kg 13 ¹ / ₄ lb
08 - Natural cork	W 563 x D 437 x H 45 mm W 23 ¹ / ₃₂ " x D 16 ¹¹ / ₃₂ " x H 1 ⁴⁹ / ₆₄ "	130.008.002	2 pcs	6 kg 13 ¹ / ₄ lb

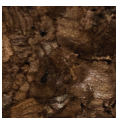
Mrs Rocha

MOVECHO®

Design by Alzira Peixoto + Carlos Mendonça



	W x D x H	Article no.	Pack	Weight
09 - Toughened white glass	W 848 x D 842 x H 8 mm W $33^{25}/64$ " x D $33^{5}/32$ " x H $0^{5}/16$ "	130.009.001	1 pcs	8,6 kg $18^{61}/64$ lb
09 - Toughened black glass	W 848 x D 842 x H 8 mm W $33^{25}/64$ " x D $33^{5}/32$ " x H $0^{5}/16$ "	130.009.002	1 pcs	8,6 kg $18^{61}/64$ lb



Dark
agglomerated cork



Natural
agglomerated cork



Toughened
white glass



Toughened
black glass

Cleaning and maintenance

MOVECHO®

The following care instructions are recommendations only. MOVECHO is not responsible for the inappropriate and incorrect maintenance of the products.

CORK

Being a natural material, it is susceptible to shade variations.

You should:

- Use a soft cloth slightly moistened with water. After cleaning, always use a dry cloth.
- In case of difficult dirt stains, gently rub the affected area with a 400 grit sandpaper.

Should not:

- Use any type of caustic or acid detergent containing chlorine, solvents (thinners) and abrasive products (such as hard sponges).
- Place hot objects in direct contact with the surfaces. The same applies to sharp objects.
- Expose furniture to direct sunlight (to prevent color changes).

WOOD

SOLID / SHEETS / MDF / PLYWOOD / MELAMINE / PHENOLIC

Being a natural material, they are susceptible to variations of shafts (solid wood and veneers) and shades.

You should:

- Immediately clean all liquids in contact with their surfaces.
- If there are grease stains, remove them with a soft cloth slightly moistened with neutral soap.

After cleaning, always use a dry cloth.

Should not:

- Use any type of caustic or acid detergent containing chlorine, solvents (thinners) and abrasive products (hard sponges).
- Place hot objects in direct contact with the surfaces. The same applies to sharp objects.
- Expose furniture to direct sunlight (to prevent color changes).

GLASS

TEMPERED / LACQUERED

You should:

- Remove the powder with a duster, then use a soft cloth (preferably 100% cotton) moistened with glass cleaner. After cleaning, always use

a dry cloth.

Should not:

- Use any type of caustic or acid detergent containing chlorine, solvents (thinners) and abrasive products (such as hard sponges).

METAL

INOX / STEEL / BRASS

You should:

- For a perfect finish, clean with a soft dry cloth or with a suede cloth.
- Clean without circular movements, only longitudinal direction.
- In the case of brass use a specific cleaner if it is oxidised.

Should not:

- Use abrasive products (such as hard sponges) or cleaning products with acids or active bases.

FABRICS

FABRIC / CARPET

You should:

- Protect the fabric from direct sunlight to prevent color fading.
- Regular cleaning using a vacuum cleaner and / or a steam engine is recommended.
- In fresh stains diligent action is recommended with a soft sponge or absorbent cloth without rubbing.

Should not:

- Rub stains
- Use products containing benzene, acids or other solvents.

ACRYLIC

You should:

- Use a soft cloth slightly moistened with water. After cleaning, always use a dry cloth.

Should not:

- Expose to direct sunlight (to prevent shape from changing)
- Use any type of caustic or acid detergent containing chlorine, solvents (thinners) and abrasive products (hard sponges).
- Place hot objects in direct contact with the surfaces. The same applies to sharp objects.

VALCHROMAT

You should:

- Use a soft dry cloth.
- In case of stain use an oil based on Paraffinum Liquidum, Isopropyl, Palmitate, Tocopheryl Acetate (eg Johnson's Oil).

Should not:

- Expose furniture to direct sunlight (to prevent color changes).
- Place hot objects in direct contact with the surfaces. The same applies to sharp objects.

LACQUERED SURFACES

You should:

- Use a soft cloth slightly moistened with water. After cleaning, always use a dry cloth.

Should not:

- Use any type of caustic or acid detergent containing chlorine, solvents (thinners) and abrasive products (hard sponges).
- Place hot objects in direct contact with the surfaces. The same applies to sharp objects.
- Expose furniture to direct sunlight (to prevent color changes).